



HT 330 L | HT 330 Dual | HT 330 P

Robust, modern, heavy-duty, desktop metal laminating machines for pouches.



Customer benefits:

- Simple, user-friendly control panel
- LED speed / warm-up display
- Sleep mode for periods of inactivity⁽¹⁾
- Anti-jam reverse button
- Cold lamination button
- Silicone rollers - no carrier required
- Fast warm-up times
- Compact design

Maximum:

Width
 **330 mm**

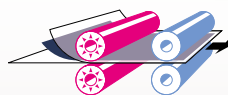
Pouch thickness up to⁽¹⁾
 **250 mic.**

Product thickness up to
 **1.5 mm**

Output:

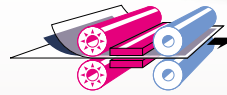


Max. laminated A4
 sheets per hour
420



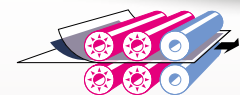
HT 330 L

Entry-level laminator suitable for both office and home use, with 2 heated rollers.



HT 330 Dual

Mid-level laminator particularly suited to office use, with 2 heated rollers and 2 hot plates.



HT 330 P

Heavy-duty laminator suitable for use in the office as well as the print room, with 4 heated rollers for guaranteed best results.

Performance is dependent on the machine model, the product type, the working environment and the operator.

⁽¹⁾ HT 330 L can only use 125 microns and has no sleep function.

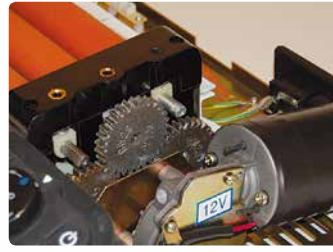




Simple, reliable and easy to use control panel which guides the user through the laminating setup process. LED's indicate the speed and temperature of the machine.



Silicone rollers guarantee a perfect lamination result every time whilst removing the need to use a laminating carrier.



The all-metal gearing and robust motor make this a reliable and durable machine.



RENZ high-quality lamination pouches come in various thicknesses from 80 - 250 microns.

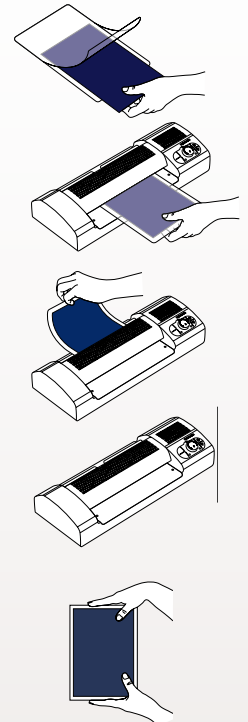
RENZ express pouches can lead to savings of up to 30% compared to normal lamination pouches. These pouches are heat sealed along the long edge, thus reducing the time needed to go through the machine.



Customer friendly colour packaging.

Technical data:	HT 330 L	HT 330 Dual	HT 330 P
Working width:	330 mm	330 mm	330 mm
Min. thickness:	2 x 80 microns	2 x 80 microns	2 x 80 microns
Max. thickness:	2 x 125 microns	2 x 250 microns	2 x 250 microns
Warm-up time:	4 min	4 - 5 min	5 min
Variable speed:	No	No	Yes
Laminating speed:	650 mm/min	650 mm/min	300 mm up to 1,500 mm/min
Laminating temperature:	0° - 160°	0° - 160°	0° - 160°
Temperature control:	Automatic	Automatic	Automatic
Cold lamination:	Yes	Yes	Yes
Photo lamination:	Yes	Yes	Yes
Standby function:	No	Yes	Yes
Reverse function:	Yes	Yes	Yes
Carrier required:	No	No	No
Number of heated rollers:	2	2 + 2 hot plates	4
Number of rollers:	4	4	6
Machine dimensions L x W x H:	550 x 200 x 110 mm	550 x 200 x 110 mm	600 x 300 x 140 mm
Machine weight:	9.2 kg	9.7 kg	17 kg
Machine packaging dimensions L x W x H:	600 x 260 x 170 mm	615 x 265 x 170 mm	680 x 380 x 230 mm
Machine weight with packaging:	10.0 kg	10.6 kg	18.8 kg
Power requirement:	230/250V / 50Hz / 500W 115/200V / 60Hz / 500W	230/250V / 50Hz / 800W 115/200V / 60Hz / 800W	230/250V / 50Hz / 1150W 115/200V / 60Hz / 1150W
Power consumption in standby mode	-	5W	5W
Power consumption in cooling mode	15W	15W	15W

Workflow:



Technical modifications may be made without notice.

Performance is dependent on the product type, the working environment and the operator.

For further information and videos please visit: